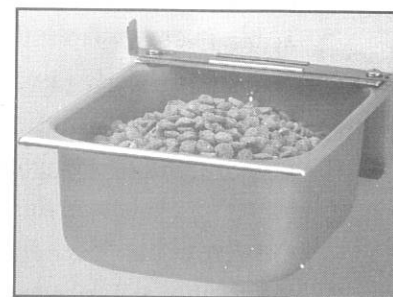


Owner's Manual

Models 1400 Feeding Pan

Nelson Model 1400 Dog Feeding Pan is made from tough 304 stainless steel and is designed to mount to a wall or kennel pole. The bowl is attached to a stainless steel wall bracket by a latch bar making pan removal easy and fast for cleaning. The feeding pan is indestructible and can't be moved or tipped over.



Components

- Wall Bracket
- Feeding Pan
- Hardware Pack for mounting feeding pan to wall bracket.
Includes (2) 1/4-20 x 5/8" Phillips head screws, (2) 1/4" hex nuts.
- Latch bar

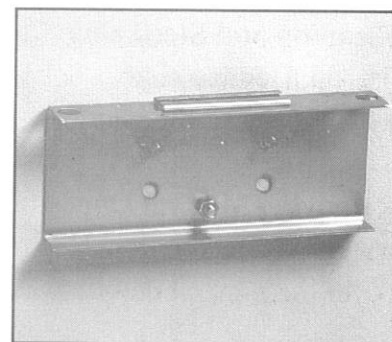


Assembly

Step 1. Mount Wall Bracket to Wall or Kennel Pole

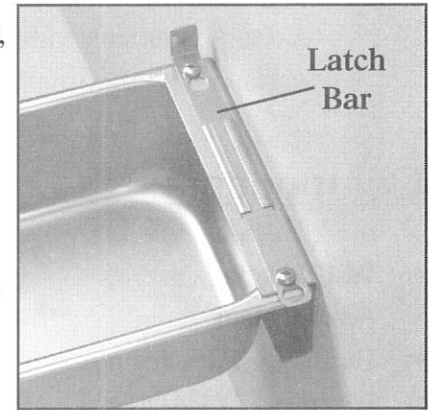
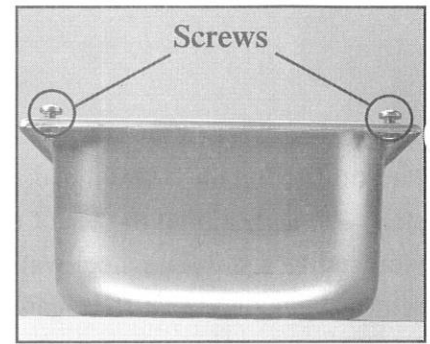
Mount to Wall - Three 5/16" diameter bolts are required for mounting wall bracket to wall. Four carriage bolts (1 3/4" long x 5/16" diameter) and nuts are included with the Nelson's pole mounting kit (Accessory K2). The carriage bolts may or may not work with the type and thickness of your wall. It may be that 5/16" lag bolts are desirable. Lag bolts can be obtained at a local hardware store. Locate bracket such that the top holes of the bracket are a minimum of 9 inches above the floor. This allows enough room to remove the feeding pan for cleaning. Attach wall bracket to wall using two top holes and center bottom hole.

Mount to Kennel Pole - The pole mounting bracket kit (Accessory K2) contains the necessary bolts, nuts and brackets to mount the feeding pan to most kennel poles. Attach wall bracket to pole using top four holes. Locate bracket such that the top holes of the bracket are a minimum of 9 inches above the floor. This allows enough room to remove the feeding pan for cleaning.



Step 2. Attach Feeding pan to Wall Bracket

1. Mounting feeding pan to the wall bracket requires the hardware in the plastic pack (2 Phillips head screws and 2 hex nuts).
2. Thread both screws into holes in back two corners of feeding bowl. Thread screws from the top with screw heads up. Tighten screws so that screw heads just make contact with surface of pan then back out 2 3/4 complete rotations. The length the screws are backed out of feeding pan determines how tight the latch bar operates. The latch bar locks and releases the feeding pan from the wall bracket. The further the screws are backed out the looser the latch bar operates. Conversely, the further the screws are set into the feeding pan the tighter the latch bar operates. Some experimentation may be required to find the optimal setting.
3. Once proper setting of screws is determined, lock the screws in place by installing a hex nut on bottom of each screw.
4. Slide latch bar into retainer on wall bracket, handle up or down, whichever you prefer. The latch bar will go either way with the handle on the right or left side of pan, whichever is convenient.
5. Lift feeding bowl upwards onto wall bracket such that screw heads on pan pass through bracket and through latch bar. Slide latch bar so as to capture screw heads in slots on latch bar.

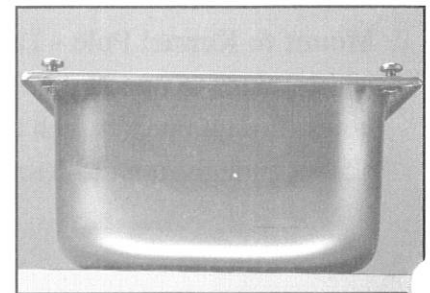


Maintenance

Cleaning and Sterilizing. Clean feeding pan as required. To remove the feeding pan from the wall bracket, line up latch bar so that bolts on the back of the feeding pan slide through wall bracket. Pan may be sterilized with a disinfectant solution.

Removing Mineral Deposits. Mineral deposits can be removed from the feeding pan by soaking the pan in a water-vinegar solution. Remove the feeding pan from the wall bracket. Fill the pan up with enough water to cover the mineral deposits. Mix in one cup of vinegar. Let the bowl soak for 24 hours and wipe clean.

Tightening / Loosening Latch Bar. The length the screws are backed out of feeding pan determines how tight the latch bar operates. Tighten screws so that screw heads just make contact with surface of pan then back out 2 3/4 complete rotations. The further the screws are backed out the looser the latch bar operates. Conversely, the further the screws are set into the feeding pan the tighter the latch bar operates. Some experimentation may be required to find the optimal setting.



Model 1400 Parts List

To Order Parts Call 1-888-884-6606/319-363-2607 or visit us on the web at www.nelsonmfg.com

Part #	Description
1402	Wall Bracket
*1201	Feeding Pan with square corners (includes mounting fasteners, Part #1214)
*1201R	Feeding Pan with two round and two square corners (includes mounting fasteners, Part #1214)
1214	Mounting fasteners for mounting feeding pan to wall bracket. Includes (2) 1/4-20 x 5/8" Phillips head screws, (2) 1/4" hex nuts.
1203	Latch Bar
Acc. K2	Pole Mounting Kit



*The feeding pan with the square corners was replaced with the feeding pan with round corners in May 2002

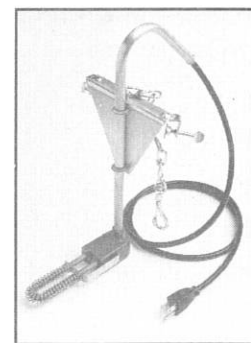
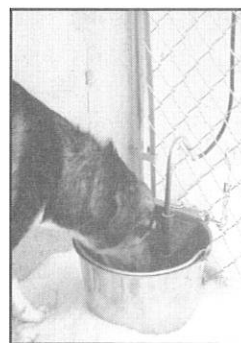
Other Nelson Products

Call for a FREE brochure or to place an order 1-888-844-6606. Visit our web site: www.nelsonmfg.com

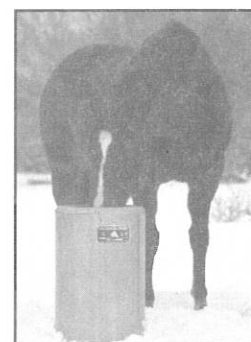
Nelson Model 1200 Automatic Waterer provides a constant supply of fresh water and eliminates the hassles and expense of manually watering. The Model 1200, a companion to the Model 1400 Feeding Bowl, is made from the same tough 304 stainless steel, is virtually maintenance-free and is designed for easy cleaning.



With a Nelson Water Bucket Heater your dog's water never freezes. You never have to knock ice out of the bucket, and your dog never goes without water. The thermostatically controlled heater costs just pennies a day to operate. Works in all types of buckets - plastic, metal and rubber - up to 5 gallons. 3 year warranty. UL Listed.



Nelson Automatic Livestock and Horse Waterers provide a constant supply of fresh clean water and are available with optional heaters to prevent freeze-up. Nelson 300 & 700 Series Automatic Waterers are available in several configurations. They're ideal for livestock, horses, exotic animals and, yes, even dogs.



Warranty

Nelson Model 1400 Feeding Pan is guaranteed against defects in workmanship and/or materials for One Year. Nelson Manufacturing Company will repair or, at its option, replace without charge, any parts found defective upon examination at the factory if returned within guarantee period, transportation charges prepaid. Replacement shipment will be made transportation charges prepaid by Nelson.



Nelson Manufacturing Company

3049 12th Street S.W.

Cedar Rapids, Iowa 52404

Phone: 319-363-2607

Phone: 888-844-6606

Fax: 319-363-3601

E-mail: info@nelsonmfg.com

Visit Us On The Web

www.nelsonmfg.com

1. New Product Information
2. Parts Lists & Prices
3. Installation Instructions
4. Order Parts Online