

Kuranda Slim Line Dog Bed

rev. 3.16.17

assembly instructions

PARTS LIST

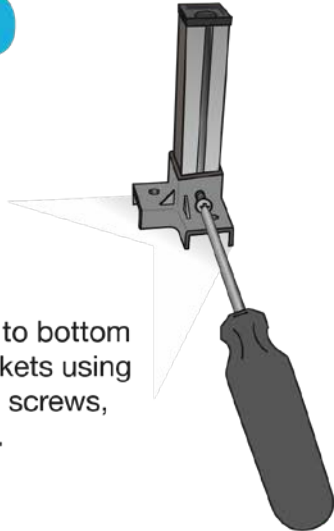
(2) long and (2) short frame rails
(4) top and (4) bottom corner brackets
(4) legs with leg protectors

(8) machine screws
(4) self tapping screws
(1) Fabric

(8) lock nuts

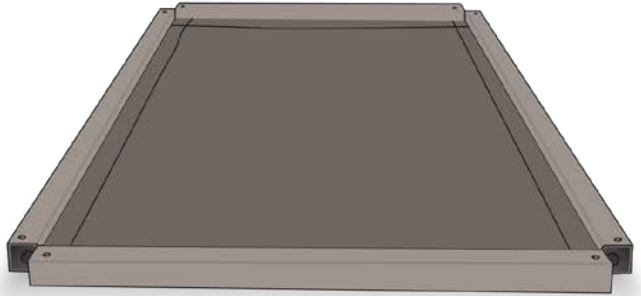
Step 1

Attach legs to bottom corner brackets using self tapping screws, tighten fully.



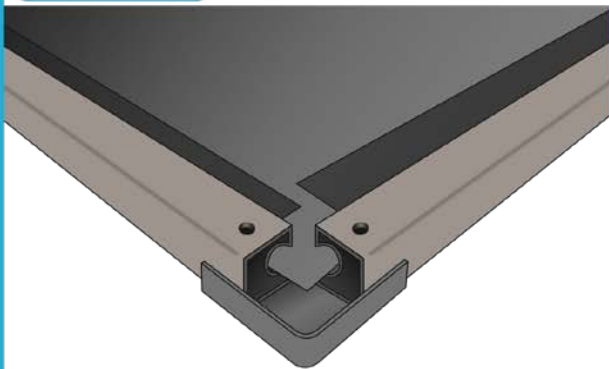
Step 2

Lay fabric face down on flat surface. Attach frame rails to fabric by inserting fabric edge into rail channels.



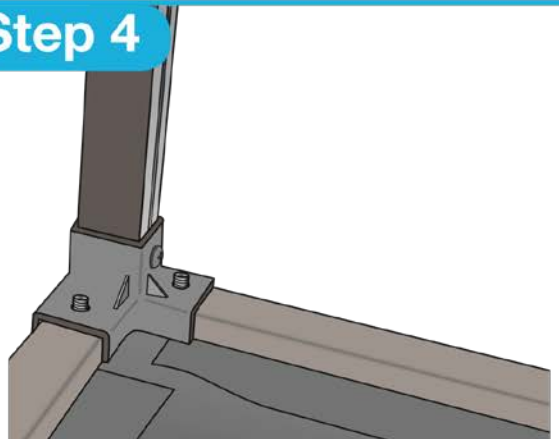
Step 3

Position top corner brackets at each corner, insert screws through brackets and frames.



Step 4

Place bottom corner brackets and secure with lock nuts.



Step 5

Turn bed right side up and tighten screws and nuts.



Comments or Questions? Call Therian on
1800-251-766 or 07 5657-6777

Leg Set Screws:

Periodically check leg screws so that they do not come out and create an ingestion hazard.

Cleaning Solutions:

Chlorine based cleaning solutions will corrode aluminium. If using a bleach or chlorinated cleaner, be sure to rinse thoroughly. Corrosion of rails and corner brackets due to caustic cleaners is not covered under Kuranda's "Chewproof" Guarantee.

KURANDA DOG BED GUARANTEES**HOW ARE THE DOG BEDS CHEWPROOF?**

Any place the fabric is in a position to be chewed, it is protected by an aluminium sleeve. There are no corner gaps to bite. Once in a while a dog will bite through a leg or side piece but it is quite rare. This image shows how the fabric fits into the frame of the bed so your dog cannot reach the fabric. Caution: Fabrics are vulnerable to tearing by persistently scratching or digging dogs.

KURANDA DOG BEDS ARE GUARANTEED CHEWPROOF FOR ONE FULL YEAR!

Kuranda guarantees the structural integrity of the frames and fabrics of their dog beds against chewing by a dog for a period of one year from date of purchase. Accordingly, Kuranda will replace frame parts and fabric damaged by dogs chewing the bed only to the point of not being useable at no charge during this period. This warranty excludes damage caused by dogs scratching the fabric. This warranty includes chewing of corner fittings and legs. Fabrics covered under this guarantee by chewing only are 40 oz solid vinyl and ballistic nylon. Multiple fabric replacements for the same bed will be handled on a case by case basis.

Please call us if you have any questions in Australia on 1800-251-766.



Unit 4, 26 Commercial Drive,
Ashmore QLD 4214
Tel: +61 (0)7 5657 6777
Fax: +61 (0)7 5657 6788
info@therian.com.au
www.therian.com.au